

Aggregates in RDA

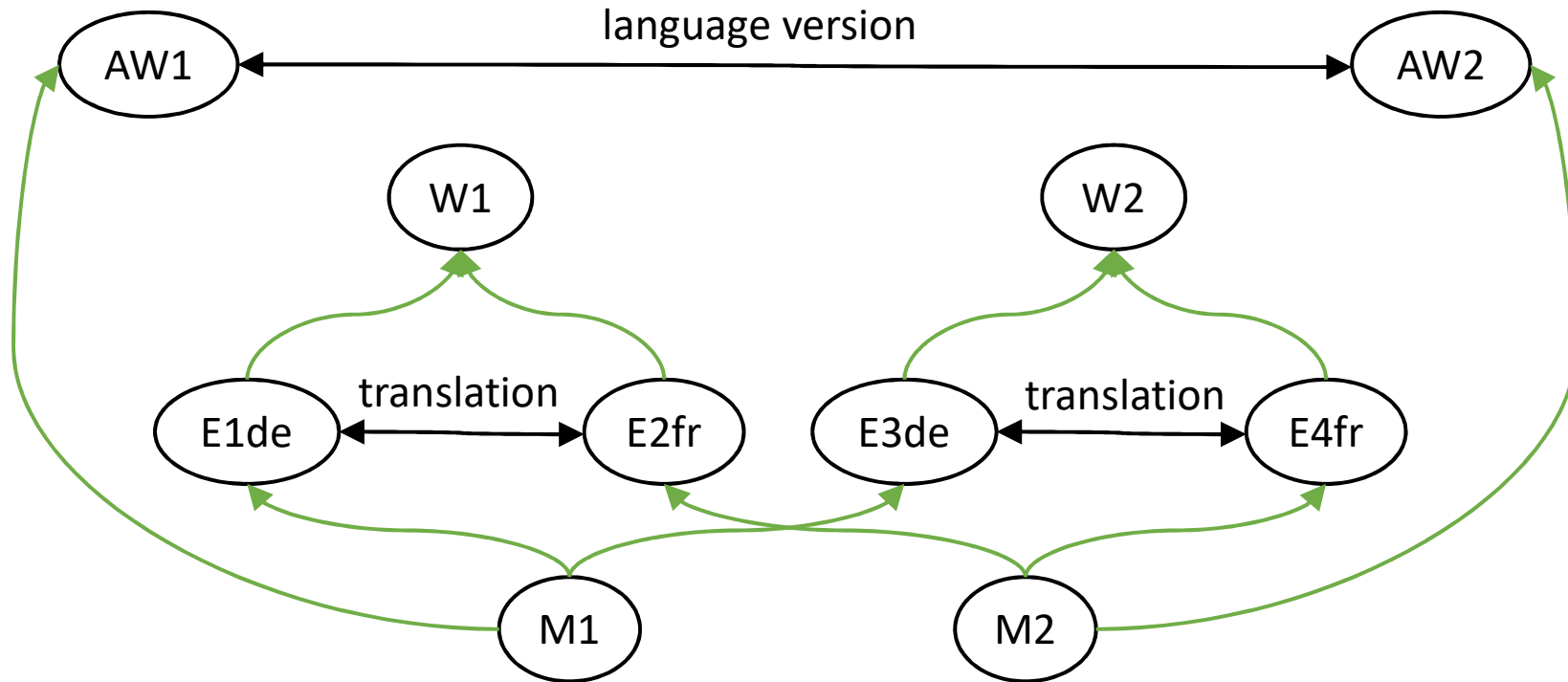
Translations and whole-part structures

Gordon Dunsire

Presented to RDA in Europe 2022

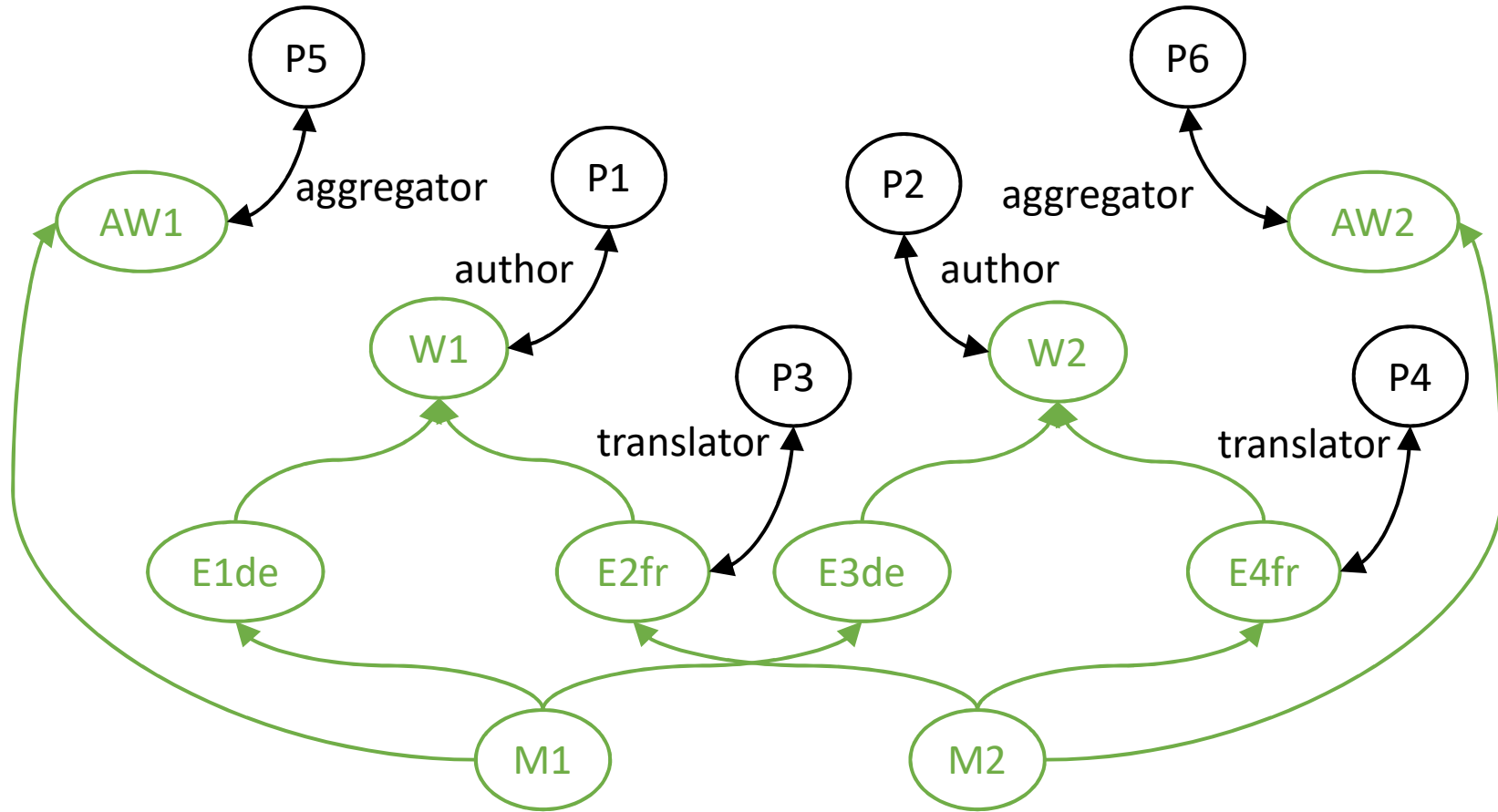
17 November 2022

Aggregate of translations ✓



Translation of aggregates ✗

Aggregator of translations ✓



Translator of aggregates ✗

Role relationships

P1, P2: author of aggregated work/expression (de)

P3, P4: translator of aggregated work/expression (fr)

P5, P6: aggregator of aggregating work

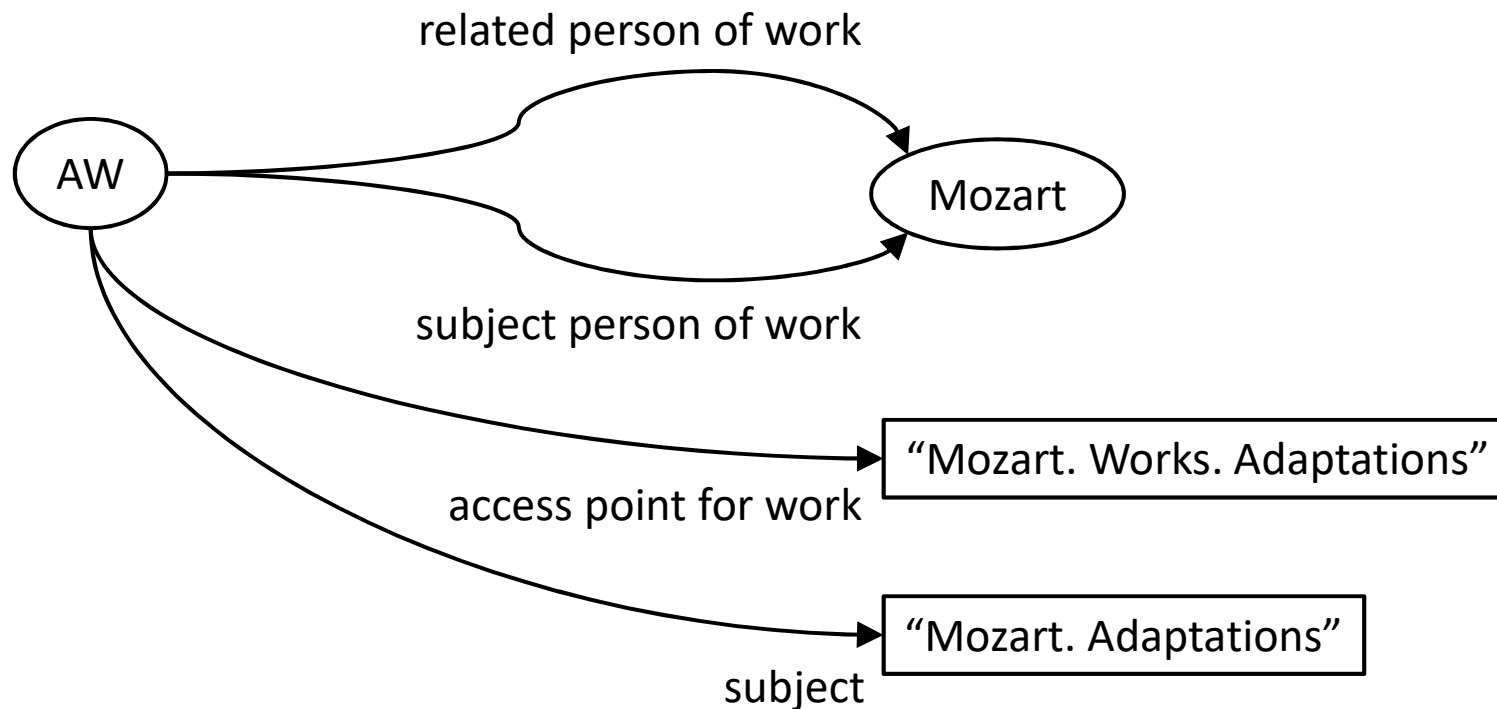
Any or all of P1-6 may be the same person (agent)

P3, P4 can represent other 'expression transformation' roles; e.g. musical arrangement

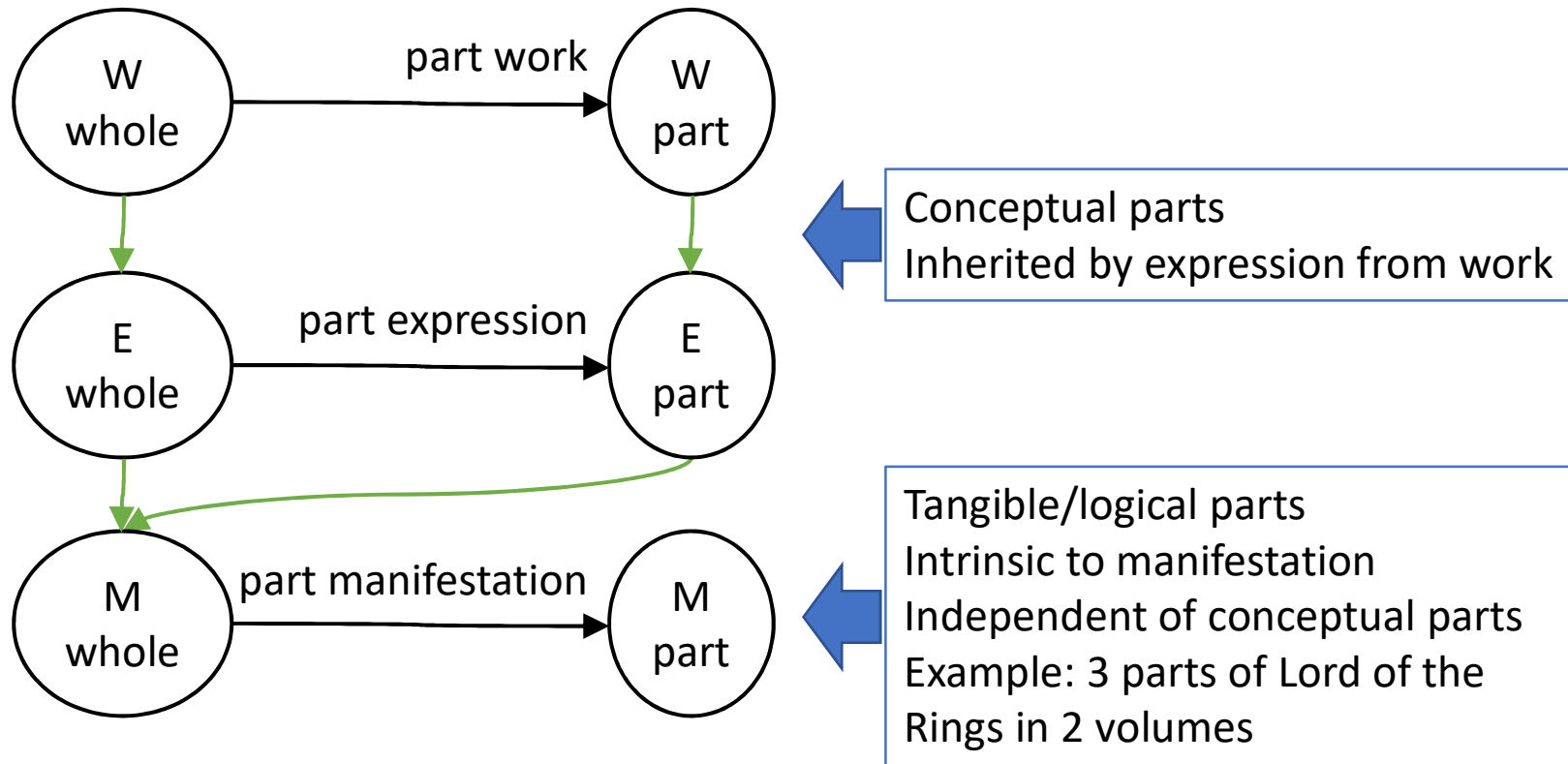
Publisher agent of aggregate manifestation may be the same as aggregator agent of aggregating work

Other role relationships

Relationships between agents and aggregating works may also be described via the characteristics of the aggregating plan and via access points

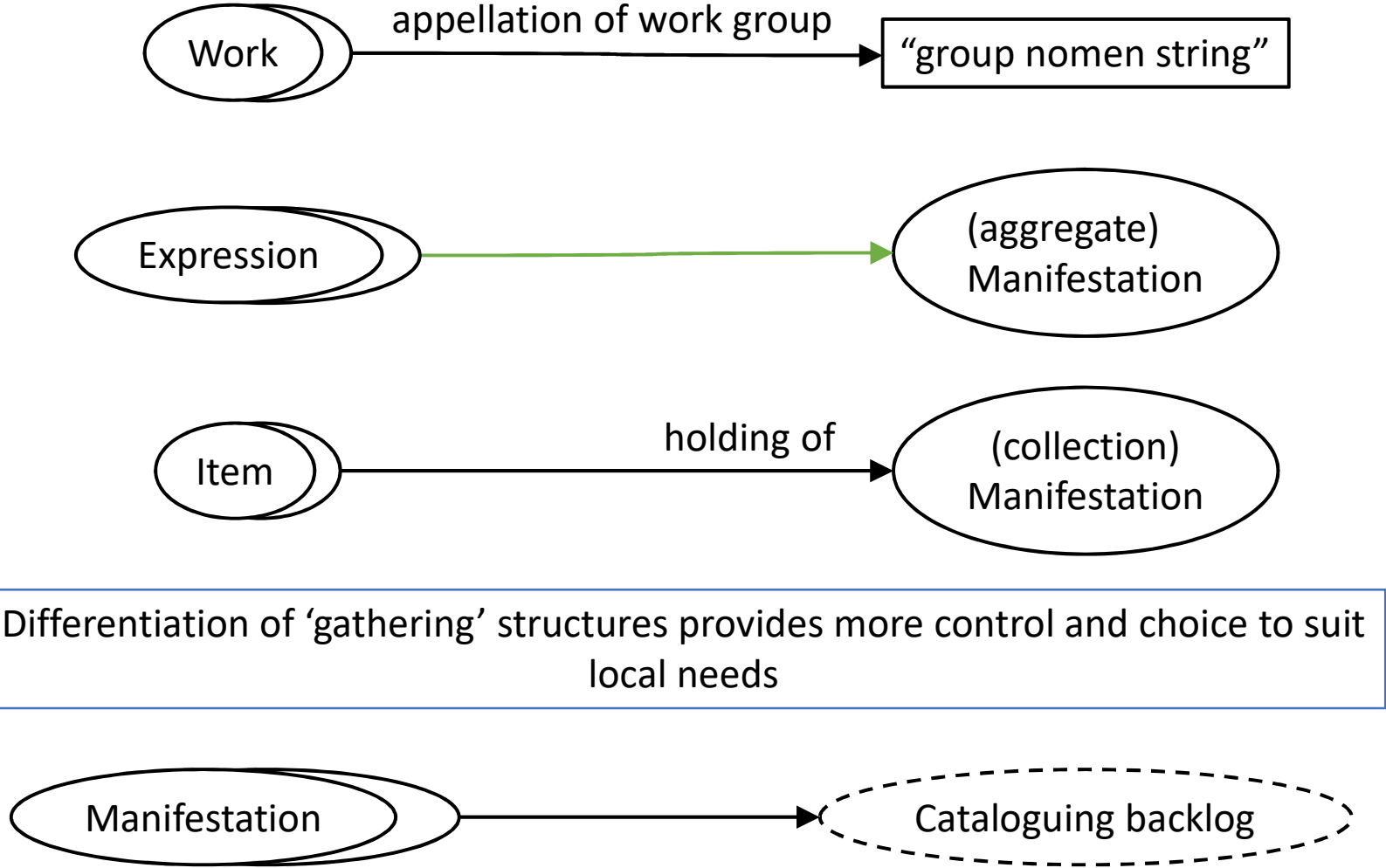


Wholes and parts



M embodies some, but not all, E parts = aggregate
M embodies all, and only, E parts (E whole) = non-aggregate

Gathering WEMIs



Thank you!